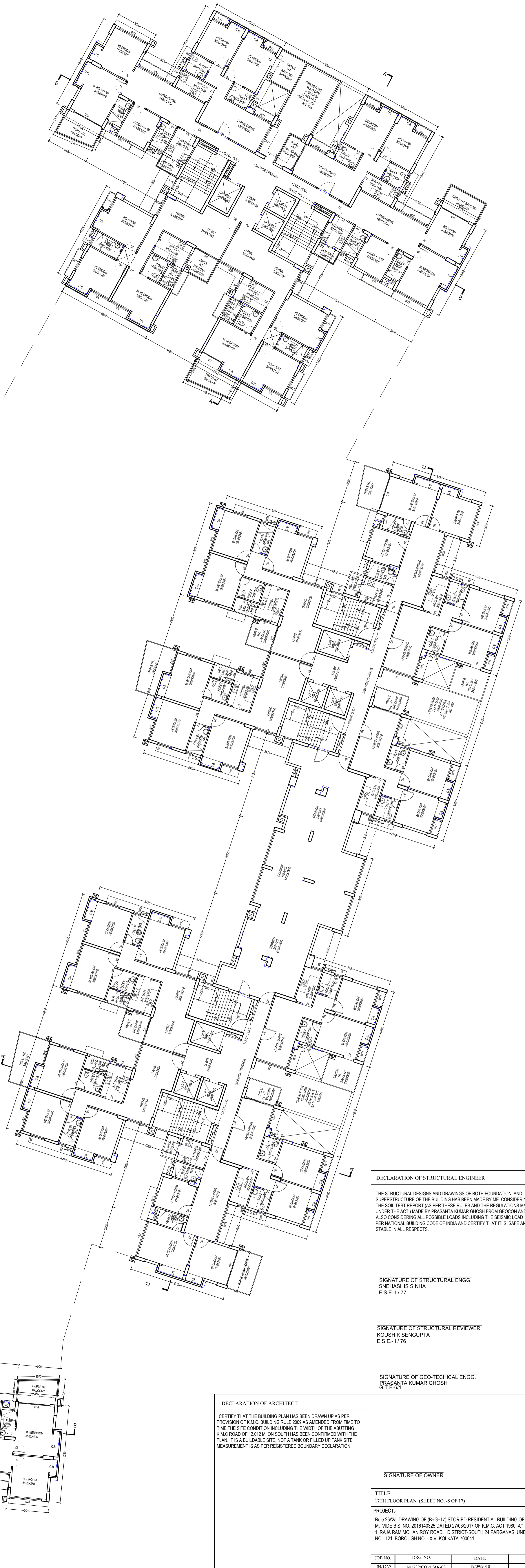


WIN MFR	SIZE (MASONRY OPENING) IN MM	SILL LEVEL	LINTEL LEVEL
W1	600X775	+1500 LVL	+2275 LVL
W2	600X775	+1500 LVL	+2275 LVL
W2a	600X1075	+1200 LVL	+2275 LVL
W3	600X1000	BOTTOM OF SLAB	
W4	700X775	+1500 LVL	+2275 LVL
W5a	700X1275	+1000 LVL	+2275 LVL
W5	700X1075	+1200 LVL	+2275 LVL
W6	700X1000	BOTTOM OF SLAB	
W7	775X(900+1075)	+300 LVL	+2275 LVL
W8	850X(900+1075)	+300 LVL	+2275 LVL
W9	900X1075	+1200 LVL	+2275 LVL
W10	1000X1075	+1200 LVL	+2275 LVL
W11	1250X(900+1075)	+300 LVL	+2275 LVL
W12	1000X1000	BOTTOM OF SLAB	
W13	1450X(900+1075)	+300 LVL	+2275 LVL
W14	1500X(900+1075)	+300 LVL	+2275 LVL
W15	1700X(900+1075)	+300 LVL	+2275 LVL
W16	1750X(900+1075)	+300 LVL	+2275 LVL
W17	1850X(900+1075)	+300 LVL	+2275 LVL
W18	1875X(900+1075)	+300 LVL	+2275 LVL
W19	2000X(900+1075)	+300 LVL	+2275 LVL
W20	2250X(900+1075)	+300 LVL	+2275 LVL
W21	2400X(900+1075)	+300 LVL	+2275 LVL
W22	2700X(900+1075)	+300 LVL	+2275 LVL
W23	3025X(900+1075)	+300 LVL	+2275 LVL
W24	3075X(900+1075)	+300 LVL	+2275 LVL
W25	3100X(900+1075)	+300 LVL	+2275 LVL

WIN MFR	SIZE (MASONRY OPENING) IN MM	LINTEL LEVEL
D	700X2325	+2275 LVL
Da	675X2325	+2275 LVL
D1	750X2325	+2275 LVL
D2	800X2325	+2275 LVL
D3	850X2325	+2275 LVL
D4	900X2325	+2275 LVL
D5	1000X2100	+2100 LVL
D6	1000X2325	+2275 LVL
D6a	1000X2325	+2275 LVL
D7	1100X2100	+2100 LVL
D8	1100X2325	+2275 LVL
D9	1500X2325	+2275 LVL
D10	1550X2325	+2275 LVL
D11	1700X2325	+2275 LVL
D12	1875X2325	+2275 LVL
D13	2200X2325	+2275 LVL
D14	2400X2325	+2275 LVL
D14'	2400X2325	+2275 LVL
D15	3075X2325	+2275 LVL
D16	2700X2325	+2275 LVL
D17	3100X2325	+2275 LVL
D18	3350X2325	+2275 LVL
D19	1100X2325	+2275 LVL
FCD1	1200X2325	+2275 LVL
FCD2	1750X2325	+2275 LVL
FCD3	850X2325	+2275 LVL
D22	700X2100	+2100 LVL



DECLARATION OF STRUCTURAL ENGINEER

THE STRUCTURAL DESIGNS AND DRAWINGS OF BOTH FOUNDATION AND SUPERSTRUCTURE OF THE BUILDING HAS BEEN MADE BY ME, CONSIDERING THE SOIL TEST REPORT (AS PER THESE RULES AND THE REGULATIONS MADE UNDER THE ACT) MADE BY PRASANTA KUMAR GHOSH FROM GEOCON AND ALSO CONSIDERING ALL POSSIBLE LOADS INCLUDING THE SEISMIC LOAD AS PER NATIONAL BUILDING CODE OF INDIA AND CERTIFY THAT IT IS SAFE AND STABLE IN ALL RESPECTS.

SIGNATURE OF STRUCTURAL ENGG.
SNEHASHIS SINHA
E.S.E.-1/77

SIGNATURE OF STRUCTURAL REVIEWER
KOUSHIK SENGUPTA
E.S.E.-1/76

SIGNATURE OF GEO-TECHNICAL ENGG.
PRASANTA KUMAR GHOSH
C.T.E.-01

DECLARATION OF ARCHITECT

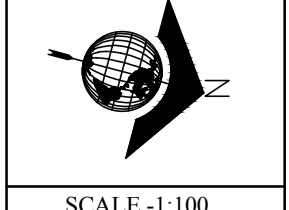
I CERTIFY THAT THE BUILDING PLAN HAS BEEN DRAWN UP AS PER PROVISION OF K.M.C. BUILDING RULE 2009 AS AMENDED FROM TIME TO TIME. THE SITE CONDITION INCLUDING THE WIDTH OF THE ABUTTING K.M.C. ROAD OF 12.00 M. ON SOUTH HAS BEEN CONFIRMED WITH THE PLAN. IT IS A BUILDABLE SITE, NOT A TANK OR FILLED UP TANK SITE. MEASUREMENT IS AS PER REGISTERED BOUNDARY DECLARATION.

SIGNATURE OF OWNER

TITLE:-
17TH FLOOR PLAN (SHEET NO. -8 OF 17)
PROJECT:-
Rule 26/2a DRAWING OF (B+G-17) STORED RESIDENTIAL BUILDING OF HEIGHT 57.625 M. VIDE B.S. NO. 2016140325 DATED 27/03/2017 OF K.M.C. ACT 1980 AT PREMISES NO.- 1, RAJA RANI MOHAN ROY ROAD, DISTRICT SOUTH 24 PARGANAS, UNDER KMC WARD NO.- 121, BOROUGH NO.- XIV, KOLKATA-700041

R/O NO.	DRG. NO.	DATE	DEALT
IN/1232	IN/1232CORP/AR-08	19/09/2018	BANVA

SIGNATURE OF ARCHITECT.
SANJAY MONDAL
C.O.A. REG. NO. CA/98/23621



ARCHITECTS PLANNERS ENGINEERS
26/2 BALLYUNGE CIRCULAR ROAD LUDYAN PARK, FLAT NO.7,
3RD FLOOR, KOL-700151. (033) 4900 0626 FAX: (033) 2264 4028
www.mnasthda.com

SCALE:-1:100